

BRUSHLESS SERVO MOTORS BMR 2000 SERIES

Series 2000, 325 VDC brushless servo motor - provides fast response, accurate control and high torque-to-inertia ratios

Performance Benefits

Cleveland Motion Controls specializes in the design of high performance brushless servo motors that provide efficiency, flexibility of application, and a long and trouble-free service life. Our TORQUEMASTER® BMR 2000 series is no exception.

With fast response, accurate control and high torque-to-inertia ratios, you can count on the TORQUEMASTER 2000 Series of servo motors to provide smooth operation throughout a full speed range. The BMR 2000 Series delivers smooth and superior low speed performance and maximum power ratings with low thermal resistance for high speed performance. In addition, with maximum torque in a smaller package, you can count on better pricing for a better overall value.

When integrated with high performance brushless amplifiers, TORQUEMASTER BMR 2000 servo motors provide effective and highly efficient motion control solutions for a

wide range of applications—including factory automation, packaging, robotics, semi-conductor, machine tools, medical instrumentation, and more.

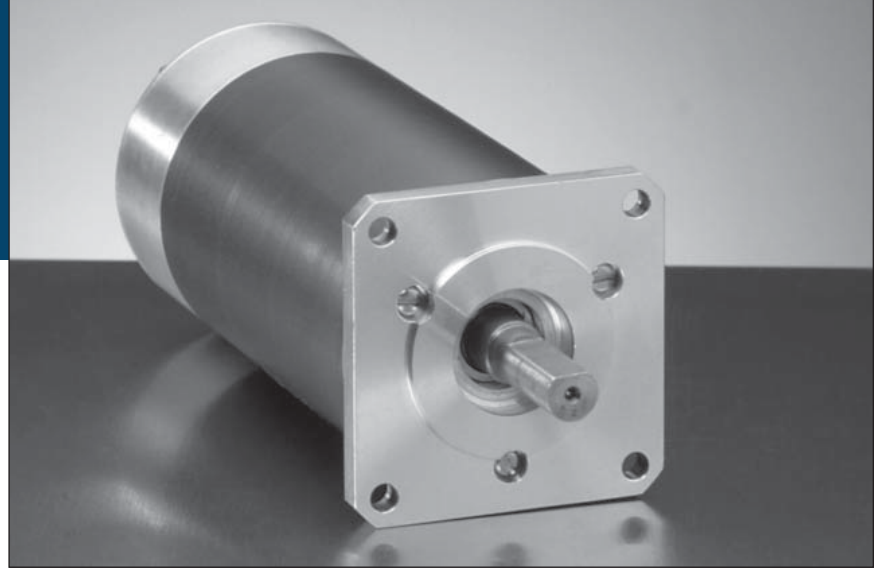
Design Features

TORQUEMASTER BMR 2000 Series servo motors are rated from 5 lb-in. to 10 lb-in. with speeds and torque stability up to 10,000 RPM - accommodating DC bus voltages up to 325 volts. They utilize the latest in high performance Neodymium, permanent magnet technology, and are available in several standard windings (as well as custom windings) to meet your most demanding applications.

Each servo motor in the TORQUEMASTER 2000 Series is ruggedly designed and manufactured for reliable performance. To satisfy many different applications, TORQUEMASTER 2000 Series motors are manufactured to NEMA/IEC specifications.

- Continuous torque ratings up to 10 lb-in. with speeds up to 10,000 RPM
- IP65 Sealing available
- NEMA mounting features available
- IEC 72 Metric specifications available
- Maximum torque per frame size with high performance Neodymium magnets
- Superior low speed performance
- Numerous custom options available
- CE / UL

BRUSHLESS SERVO MOTORS BMR 2000 SERIES

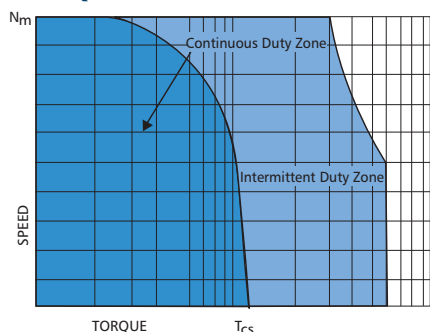


- Continuous torque range of 5 lb-in. to 10 lb-in.
- Neodymium magnet construction
- More torque per smaller frame size
- Speeds to 10,000 RPM
- High torque-to-inertia ratios

MOTOR SPECIFICATIONS

SYMBOL	MOTOR PARAMETER	UNITS	BMR2005T	BMR2010B
P	Power	KW	.214	.35
Nm	Max Operating Speed	RPM	10,000	10,000
TC	Max Stall Torque	lb-in.(Nm)	5 (.57)	10 (1.13)
TPk	Peak Torque	lb-in.(Nm)	23 (2.6)	45 (5.1)
KT	Torque Sensitivity	lb-in./AMP(Nm/Amp)	.84 (.095)	2.53 (.286)
Ke	Back E.M.F.	Volts/Krpm	10	30
Ra	Resistance Line to Line	Ohms	1.61	3.69
L	Inductance Line to Line	MilliHenry	1.2	3.69
Jm	Rotor Inertia	lb-in.-sec2 (Kg-m2)	.0004 .000045	.0009 .0001
TF	Static Friction	lb-in.(Nm)	.16 (.018)	.16 (.018)
WT	Motor Weight	lbs(Kg)	3.0 (1.35)	4.0 (1.8)

TORQUE PERFORMANCE CURVES



NOTE: Continuous torque specifications obtained with motor mounted to an 8.5"x12"x0.25" aluminum plate at 25°C ambient. Typical values are within ±10% of rating.

Relationship Between K_e & K_t

Cleveland Motion Controls uses the following important motor performance parameters for the 3 phase square wave and 3 phase sine wave brushless motors in order to properly account for the British Imperial unit system currently used in the US.

K_e = Line-to-line volts-peak / Krpm*

K_t = Pound-inches (lb-in) / peak phase amps

K_e is related to K_t as follows:

$K_t = K_e / 11.834$ for 3 phase square wave current driven amplifiers

$K_t = K_e / 13.662$ for 3 phase sinusoidal wave current driven amplifiers

*Krpm = 1000 rpm

For "RMS" values, divide peak values by $\sqrt{2}$

STANDARD SPEED/TORQUE CURVE DATA FOR SIZING A SERVO MOTOR

N_m = Maximum speed, continuous operation

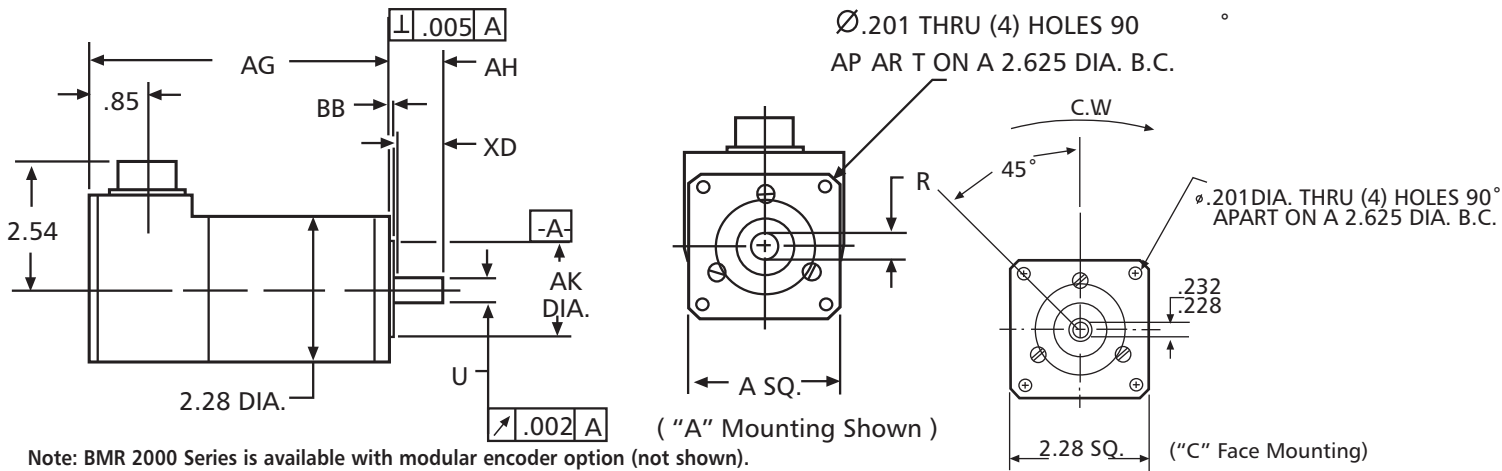
T_{cs} = Continuous stall torque

All specifications subject to change without notice.



BRUSHLESS SERVO MOTORS BMR 2000 SERIES

MECHANICAL SPECIFICATIONS

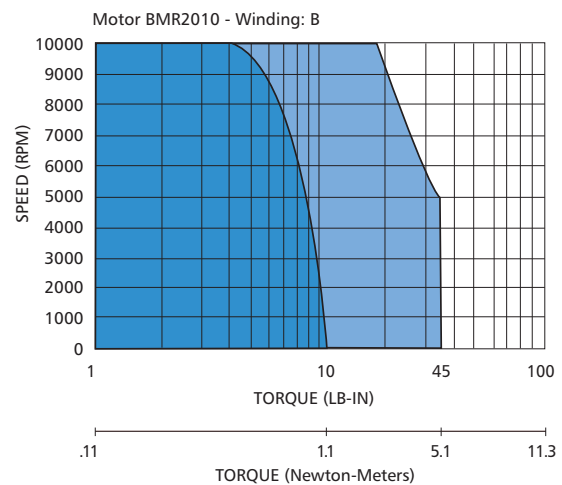
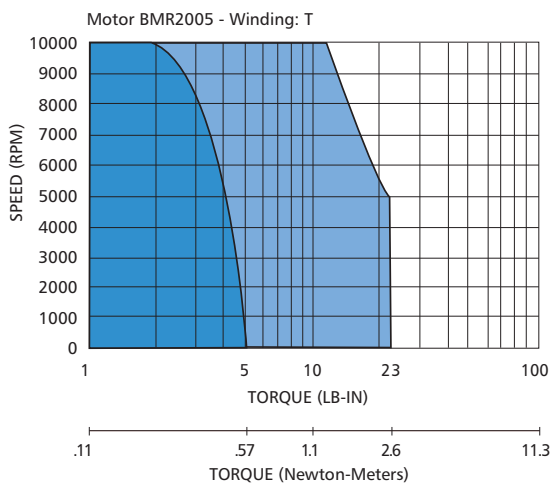


DIMENSION CHART (Dimensions may change depending upon options)

PART NUMBER	AG	A	AK	BB	U	AH	R	XD
Dimension in inches								
BMR2005	5.71	2.28	1.500	.06	.3750	.77	.357/.353	.70 FLAT
BMR2010	7.21	2.28	1.500	.06	.3750	.77	.357/.353	.70 FLAT
IEC72 (mm)								
BMR2005	145.0	57.9	50j6	1.5	8j6	30	14	2.0
BMR2010	183.1	57.9	50j6	1.5	8j6	30	14	2.0

NOTE: Dimension "AG" includes commutation feedback device and modular encoder shown on ordering information under COMMUTATION. For internal brake add 2.0" to dimension "AG"

TORQUE PERFORMANCE CURVES



**TORQUE SPEED CURVES OF OTHER WINDINGS AVAILABLE,
CONSULT FACTORY.**



BRUSHLESS SERVO MOTORS BMR 2000 SERIES

TERMINATION CHART			
FEEDBACK OPTIONS			
(B STANDARD) MS3112E-14-19P			
PIN	Com. Encoder	Resolver	Hall (Note 1)
A	Brake+	Brake+	Brake+
B	Brake-	Brake-	Brake-
C	-	S2 (Sine+)	-
D	-	S4 (Sine-)	-
E	Encoder A	-	-
F	Encoder A	-	-
G	Hall U	S1 (Cosine+)	H1
H	Hall V	S3 (Cosine-)	H2
J	Hall W	-	H3
K	Encoder 5V	R1 (Excit.+)	+5V to +24V
L	Encoder Com	R2 (Excit.-)	Common
M	Ø M1	Ø M1	Ø M1
N	Ø M2	Ø M2	Ø M2
P	Ø M3	Ø M3	Ø M3
R	Encoder B̄	-	-
S	Encoder B	-	-
T	Encoder M	-	-
U	Case Gnd.	Case Gnd.	Case Gnd.
V	Encoder M̄	-	-

Note 1. Hall Sensor Specifications

Voltage = 5V to 24V
Current = 10 ma typical, 25 ma max.
Output = Open collector

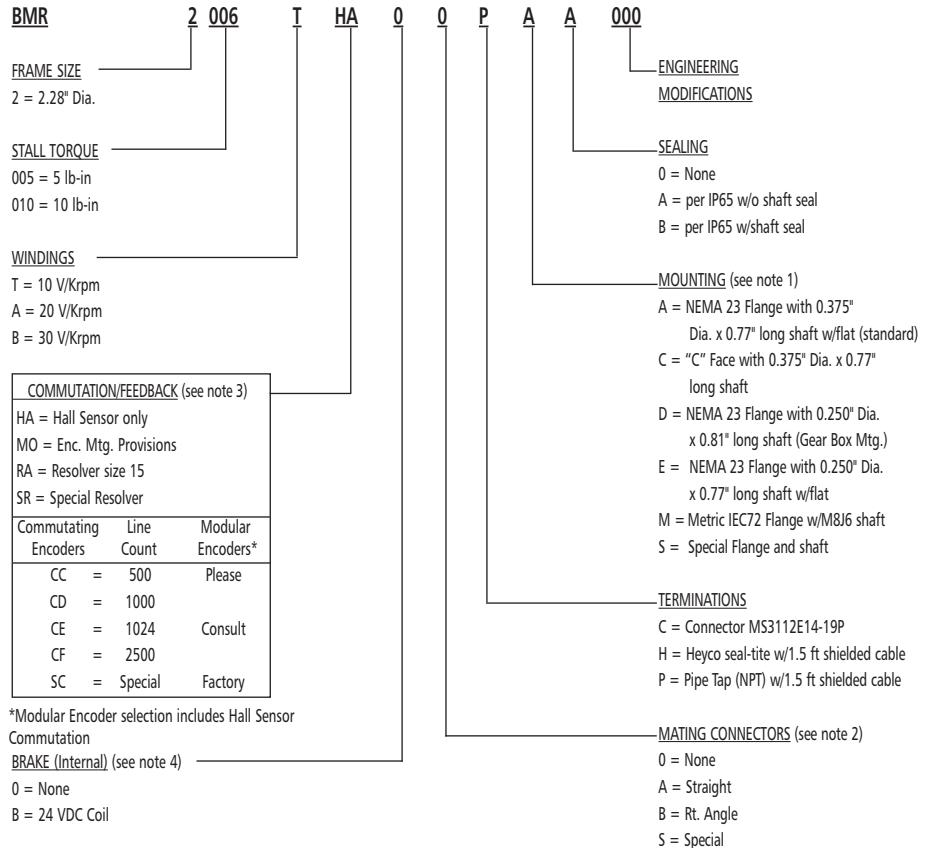
Note 2. Com. Encoder

Current = 250 ma

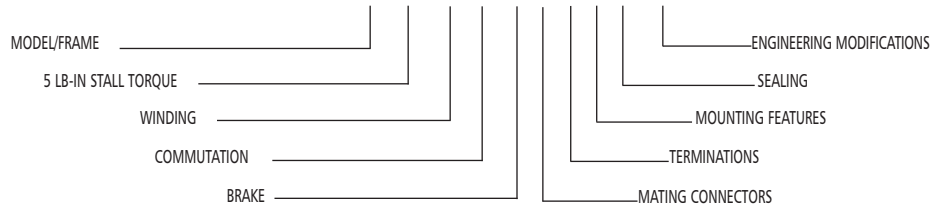
Customize The BMR 2000 To Your Exact Requirements

To satisfy various applications with cost-effective solutions, BMR 2000 Series motors are readily available with a wide range of standard capabilities. Final designs are often the result of cooperative efforts between the customer's engineering department and CMC. For assistance, call your local CMC distributor or CMC direct. We look forward to meeting your custom requirements.

BMR ORDERING INFORMATION – (For Standard Options)



EXAMPLE: BMR 2 005 T CD 0 0 C A A 000



Notes:

- Standard BMR2000 motor mounting flanges use NEMA 23 standards but allow oversized shaft diameters to carry the rated torque load. Standard NEMA shaft diameters are typically undersized for most servo ratings and are not recommended. Consult factory regarding acceptable load limits before ordering or applying this option.
- The above motors include standard MS connectors. Connector mates or cables must be ordered separately.
- Standard encoders are dual channel line driver output with a marker pulse and complementary outputs.
- Brakes are for holding static loads and not designed to stop moving loads. Standard coils are 24 volts DC.

Cleveland Motion Controls, Inc.

7550 Hub Parkway * Cleveland, OH 44125
Tel: 216.524.8800 or 800.321.8072
Fax: 216.642.2199
cmcsales@itt.com
www.cmcccontrols.com