



ITT

Cleveland Motion Controls



MS800 Series Linear Actuator

- Thrust up to 800 lbf (3558 N) and speeds up to 30 in/sec (762 mm/sec).
- Available in Direct Drive or Parallel mounts.
- Strokes available from 1 in. (24.5 mm) through 30 in. (762 mm) lengths in 1 in. (24.5 mm) increments.
- Available with ACME or Ball screws in a variety of leads to match your application.
- Variety of mounting options available.
- Available with Brush or Brushless servomotors.
- Magnetic Reed Switches optional.



Direct drive version pictured

The MS800 Linear Actuator is ideal where accurate positioning is a requirement. With thrust up to 800 lbs. (3558 N) and speeds to 30 in/sec (762 mm/sec) makes it a perfect choice to replace pneumatic or hydraulic actuators in applications requiring multiple positions. It is available with either a DC Brush or AC Brushless servomotor, allowing easy integration with your overall machine control. The stainless steel translation tube and wiper seal insures years of trouble free operation. With multiple mounting options available there is no need to build custom brackets.

General Capabilities								1:1 Timing Ratio Performance Data							
Max Stroke		Available Screws		Max Design Thrust		Max Design Speed		Screw Type	Thrust		Speed		Tested Motor	Torque	
in.	mm	Acme	Ball	lb. Force	N	in/sec	mm/sec		lb. Force	N	in/sec	mm/sec		oz.-in.	NM
30	762	A2.7	B2, B5	800	3558	30	762	A2.7	800	3560	7.3	185	BNR 3045	47	5.13
		A5						A5	800	3560	3.9	99			
		A10						A10	800	3560	1.9	48			
		B2						B2	800	3560	9.7	246			
		B5						B5	800	3560	3.9	99			

Front Mounting Options

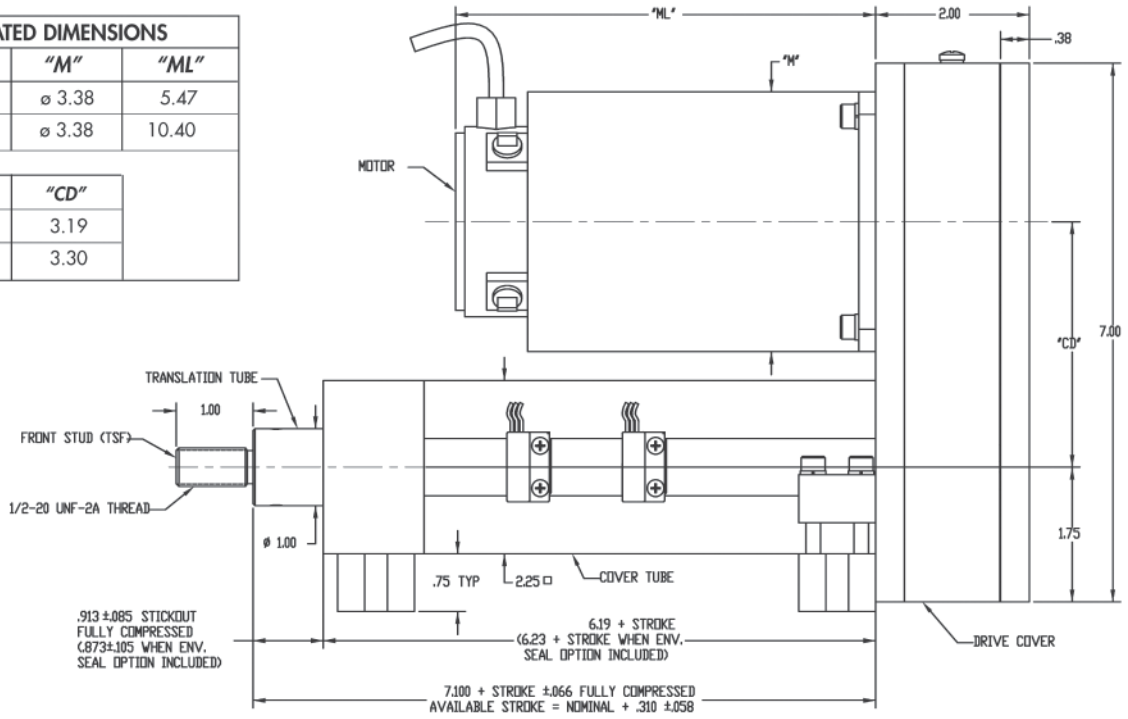
BCF - Block Clevis Front
ECF - Eye Clevis
RCF - Bearing Rod Clevis
TSF - Threaded Stud Front

Rear Mounting Options

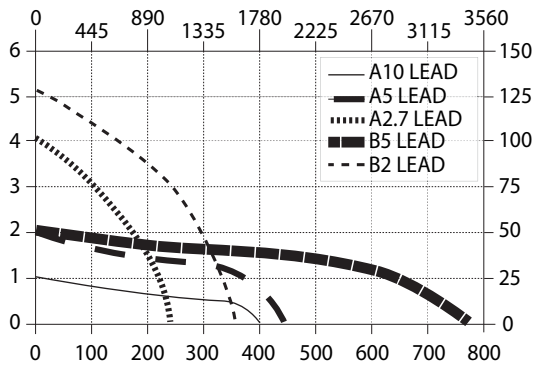
BCR - Block Clevis Rear*
BPR - Base Plate*
DBR - Double Eye Bracket Rear
CFM - Mounting Feet
TSB - Trunnion Bolt
FLF - Front Flange Mount

*Not available on direct drive units

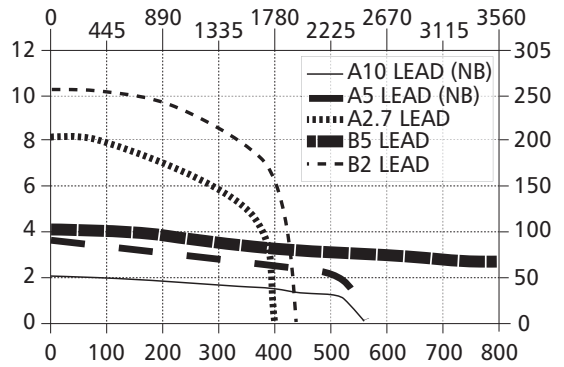
TABULATED DIMENSIONS		
MOTOR	"M"	"ML"
CMC3528	ø 3.38	5.47
CMCBNR3045	ø 3.38	10.40
TIMING RATIO	"CD"	
1:1 (T1)	3.19	
2:1 (T2)	3.30	



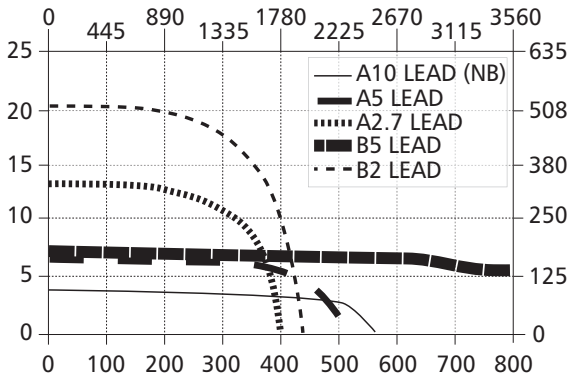
3528C @ 24VDC, 2:1 Timing
Thrust (N)



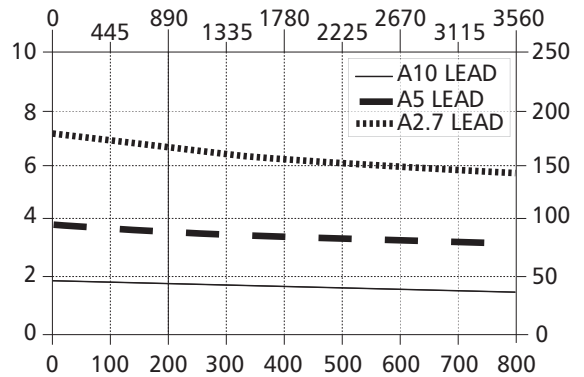
3528C @ 48VDC, 2:1 Timing
Thrust (N)



3528C @ 90VDC, 2:1 Timing
Thrust (N)



BNR 3045, 2:1 Timing
Thrust (N)



Cleveland Motion Controls

7550 Hub Parkway • Cleveland, OH 44125
 Tel: 216.524.8800 or 800.321.8072
 Fax: 216.642.2199
 cmcsales@itt.com
 www.cmcccontrols.com