



ITT

Cleveland Motion Controls



MS65 Miniature Linear Actuator

- Compact design.
- Thrust to 65 lbf (290 N) and speeds up to 10 in/sec (254 mm/sec).
- Incremental stroke availability up to 5.9 in (150 mm).
- Available with ACME or Ball screws in a variety of leads to match your application.
- Optional tooling plate with ball slide.
- Available with Servo motors.
- Optional Hall Effect magnetic limit switches (NPN or PNP).



MS65 with optional tooling plate

The MS65 Linear Actuator is perfect in applications where space is a premium. Its compact design makes it ideal for medical and semi-conductor equipment. With thrust up to 65 lbf (290 N) and speeds to 10 in/sec (254 mm/sec), it makes the perfect choice for a variety of applications. Availability of Brushless Servomotor allows for easy integration with your overall machine control. The actuator comes standard with a female threaded insert at the rod end or an optional ball slide mounted tooling plate as shown above.

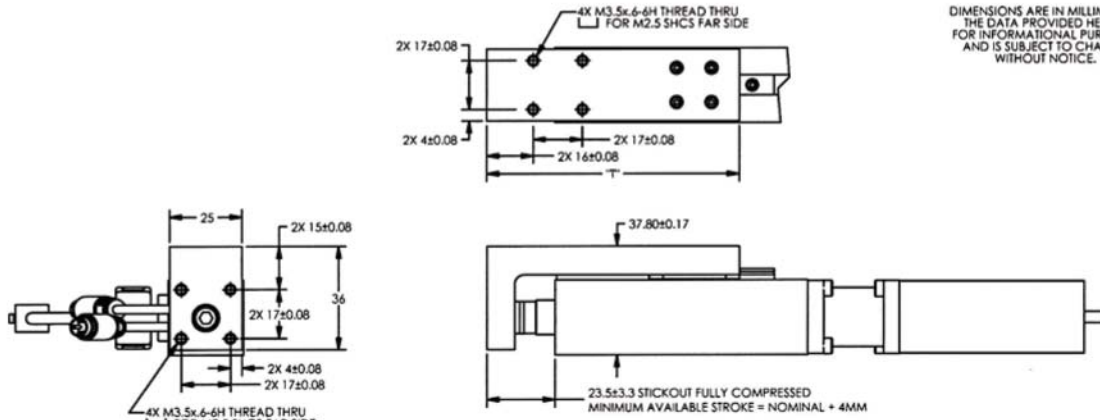
General Capabilities								1:1 Timing Ratio Performance Data							
Max Stroke		Available Screws		Max Design Thrust		Max Design Speed		Screw Type	Thrust		Speed		Tested Motor	Torque	
in.	mm	Acme	Ball	lb. Force	N	in/sec	mm/sec		lb. Force	N	in/sec	mm/sec		oz.-in.	NM
5.9	150	A2, A4	MB1	65	290	10	254	A4	65	290	10	254	AC Servo	9	63.7
		A16, A20	A16												

Mounting Options

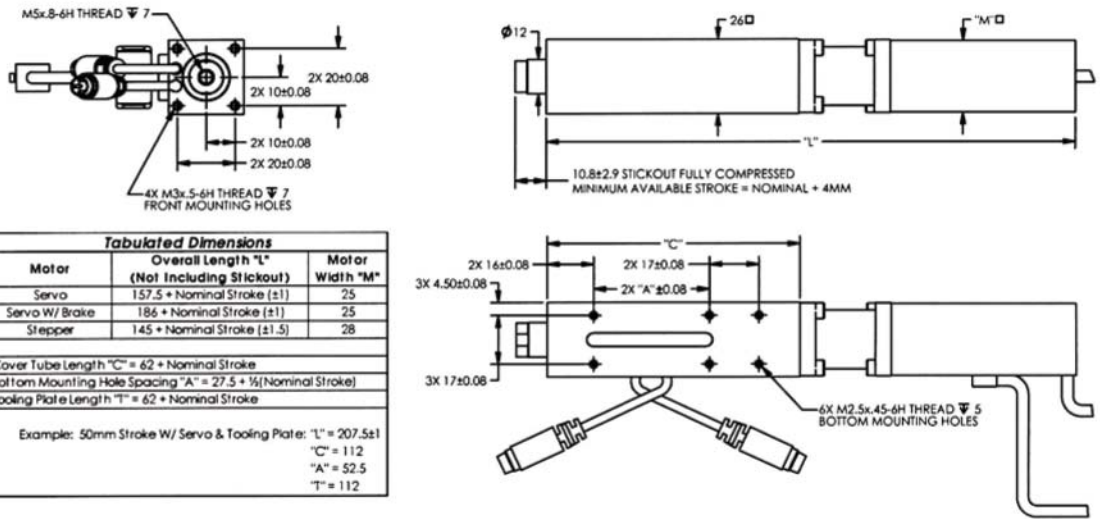
BCR - Rear Clevis
 BPR - Rear Base Plate
 BCF - Front Clevis
 RCF - Front Bearing Rod Clevis

FTF - Female Threaded Stud
 TPF - Tooling Plate (Ball Slide)

DIMENSIONS ARE IN MILLIMETERS. THE DATA PROVIDED HERE IS FOR INFORMATIONAL PURPOSES AND IS SUBJECT TO CHANGE WITHOUT NOTICE.



ABOVE VIEWS SHOWN WITH OPTIONAL TOOLING PLATE



Tabulated Dimensions		
Motor	Overall Length "L" (Not Including Stickout)	Motor Width "M"
Servo	157.5 + Nominal Stroke (±1)	25
Servo W/ Brake	186 + Nominal Stroke (±1)	25
Stepper	145 + Nominal Stroke (±1.5)	28
Cover Tube Length "C" = 62 + Nominal Stroke		
Bottom Mounting Hole Spacing "A" = 27.5 + 1/2(Nominal Stroke)		
Tooling Plate Length "T" = 62 + Nominal Stroke		
Example: 50mm Stroke W/ Servo & Tooling Plate: "L" = 207.5±1		
"C" = 112		
"A" = 52.5		
"T" = 112		

MS65 Brushless Servomotor Thrust (NM)

