



ITT

Cleveland Motion Controls



MS150 Series Linear Actuator

- Thrust to 150 lbf (667 N) and speeds to 30 in/sec.
- Available in Direct Drive or Parallel mounts.
- Strokes available from 1 in. (24.5 mm) through 10 in. (254 mm) lengths in 1 in. increments.
- Available with ACME or Ball screws in a variety of leads to match your application.
- Variety of mounting options available.
- Available with DC Brush or Brushless servomotors.
- Magnetic Reed Switches optional.



Direct drive version pictured

The MS150 Linear Actuator is ideal where accurate positioning is a requirement. With thrust up to 150 lbs. (667 N) and speeds to 30 in/sec (762mm/sec) makes it a perfect choice to replace pneumatic or hydraulic actuators in applications requiring multiple positions. It is available with either a DC Brush or AC Brushless servomotor, allowing easy integration with your overall machine control. The stainless steel translation tube and wiper seal insures years of trouble free operation. With multiple mounting options available there is no need to build custom brackets.

General Capabilities								1:1 Timing Ratio Performance Data							
Max Stroke		Available Screws		Max Design Thrust		Max Design Speed		Screw Type	Thrust		Speed		Tested Motor	Torque	
in.	mm	Acme	Ball	lb. Force	N	in/sec	mm/sec		lb. Force	N	in/sec	mm/sec		oz.-in.	NM
10	254	A2, A5	B8	150	667	30	762	A2	150	670	12.4	315	BMR2202D	5	0.57
		A5						150	670	4.2	107				
		A10						150	670	2.3	58				
		B8						150	670	2.9	74				

Front Mounting Options

BCF - Block Clevis Front
ECF - Eye Clevis
RCF - Bearing Rod Clevis
TSF - Threaded Stud Front

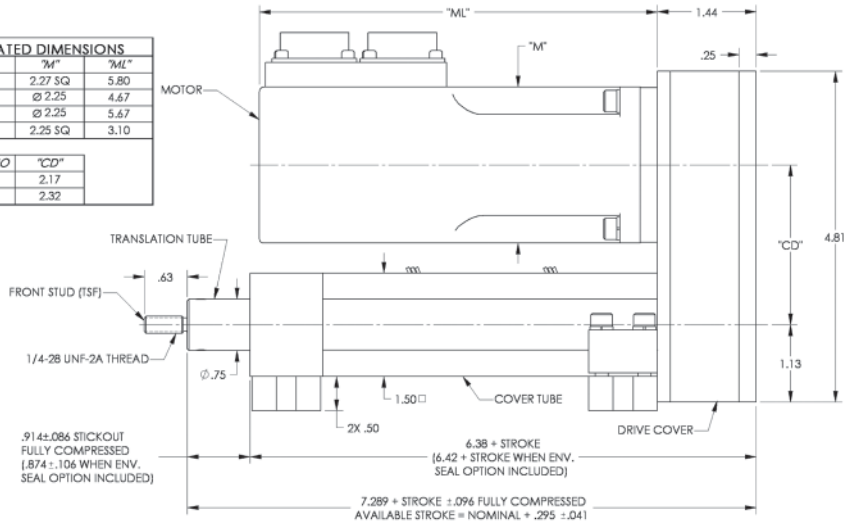
Rear Mounting Options

BCR - Block Clevis Rear*
BPR - Base Plate*
FLF - Front Flange Mount
CFM - Mounting Feet
TSB - Trunnion Shoulder Bolt

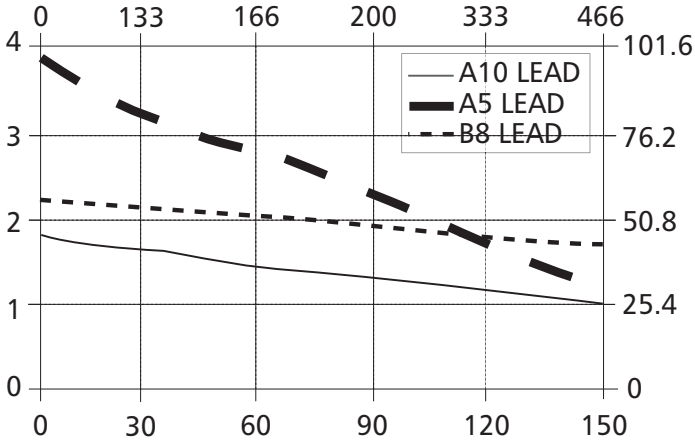
*Not available on direct drive units

TABULATED DIMENSIONS		
MOTOR	"M"	"ML"
2N2SE	2.27 SQ	5.80
2N2D1	∅ 2.25	4.67
2N2D2	∅ 2.25	5.67
2N2P	2.25 SQ	3.10

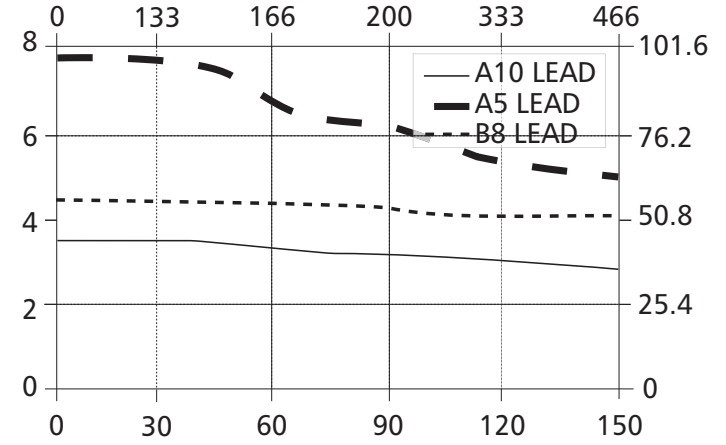
TIMING RATIO		"CD"
1:1 (T1)		2.17
2:1 (T2)		2.32



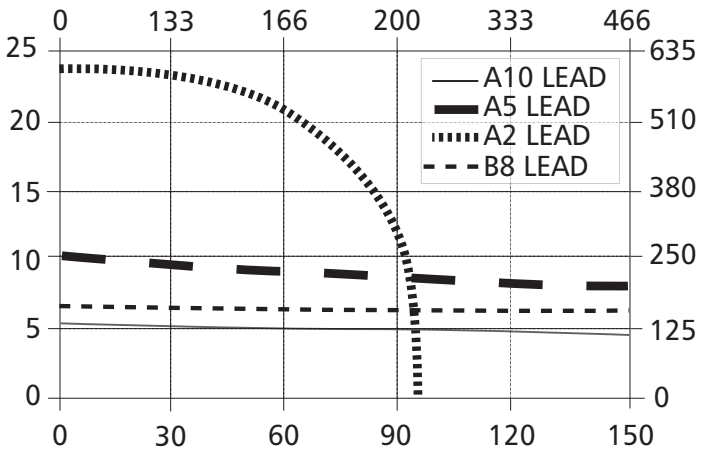
2130 @ 24VDC, 2:1 Timing
Thrust (N)



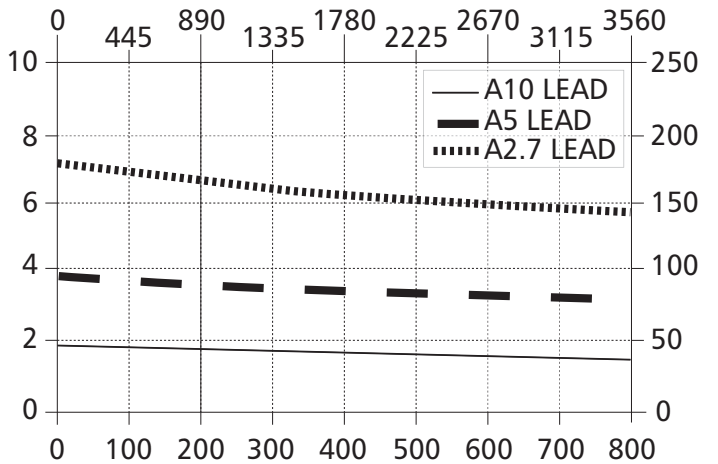
2130 @ 48VDC, 2:1 Timing
Thrust (N)



2130 @ 70VDC, 2:1 Timing
Thrust (N)



BNR2202D, 2:1 Timing
Thrust (N)



Cleveland Motion Controls

7550 Hub Parkway • Cleveland, OH 44125
 Tel: 216.524.8800 or 800.321.8072
 Fax: 216.642.2199
 cmcsales@itt.com
 www.cmccontrols.com